

# The GOOD STEWARD

Vol. 10

For the Members of St. Jude Catholic Church

No. 11

## The Beginning of Construction

*by Fr. Tim Church*

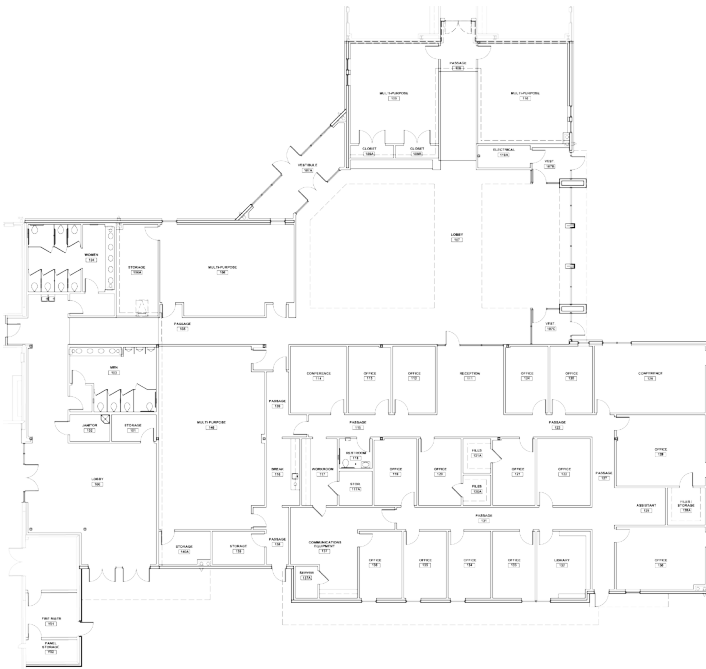
The construction of the expansion of our facility has begun. What we are building includes a new pastoral center which will house staff offices and adult education and meeting rooms. This facility will connect the old admin building to the church, through the nursery hallway. The construction will also include expansion of the church, extending the transepts to include a total of 400 additional seats. A new parking lot and “drop off drive” on the East side of the main church is also part of this phase.

There are two additional phases planed in the immediate future: an expansion of the religious education building and remodeling the admin building to more adequately support the youth program. By moving all the offices out of the admin building it will make seven rooms available (without any remodeling) for the youth and children’s programs. And, with only a modest growth in our contributions we may be able to do remodeling and expansion work in the near future.

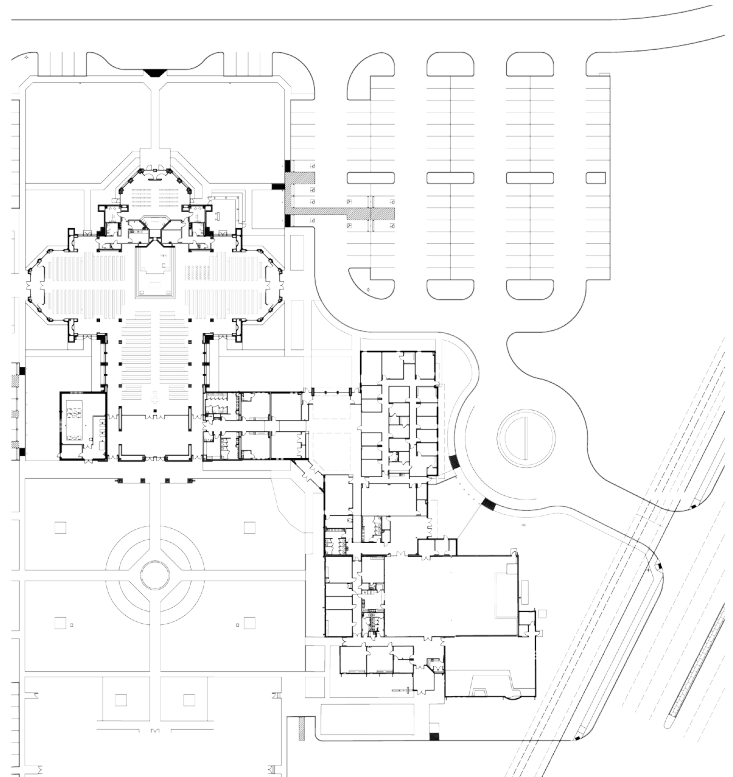
## Pledge Drive

In the simplest way possible I remind you that it is our duty to support our parish financially. The work of our parish is extraordinary. There are many who depend on us and we have many opportunities to use our resources to spread the Gospel and to build a strong parish. Whatever you do in this regard can translate into enormously valuable work. Please fill out and return your pledge card soon. If you are currently pledging and we do not hear from you we will assume that you intend to continue your current pledge. Thank you for your generosity.

*Fr. Tim Church*



*Pastoral Center Footprint*



*Overall Site Plan*